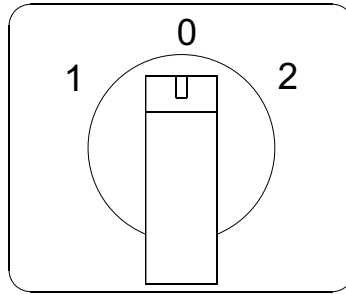
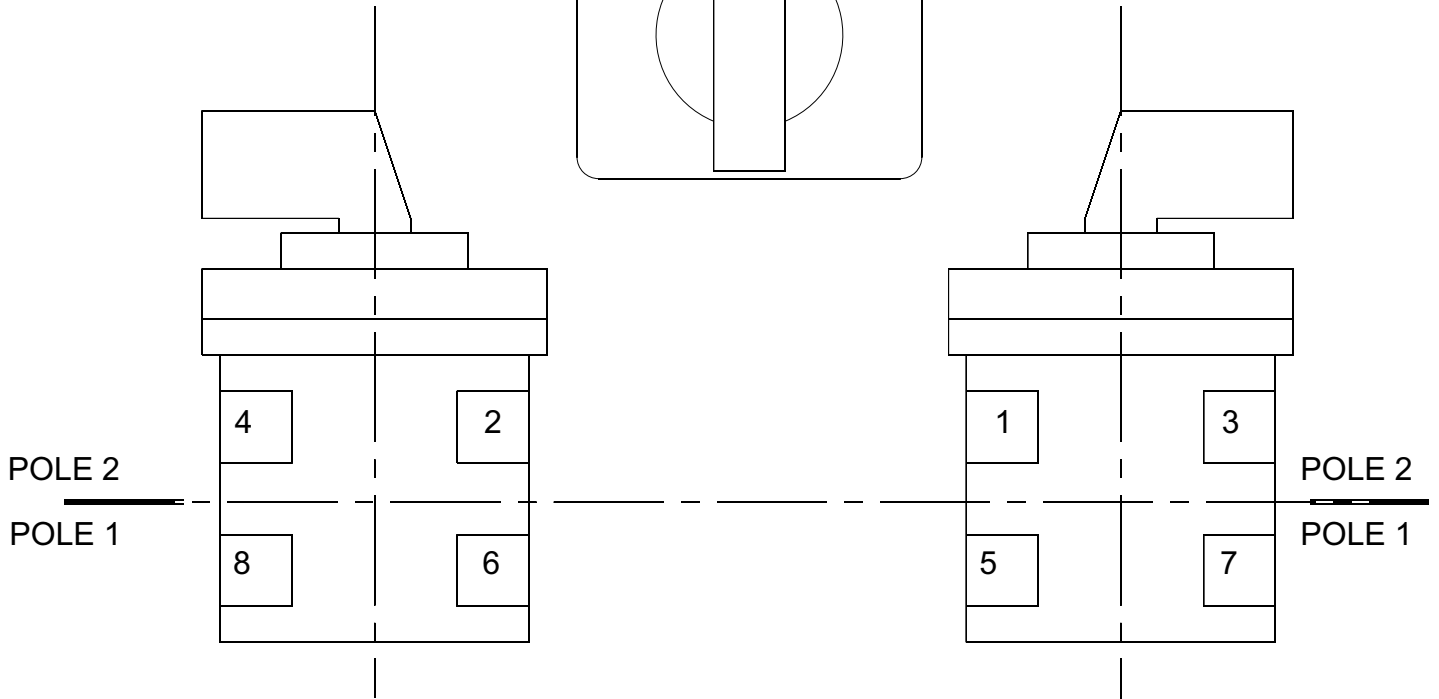


KRAUS & NAIMER CA10 A211620E
DOUBLE POLE / CAM SWITCH
CENTRAL 'OFF' - 60 ° SWITCHING

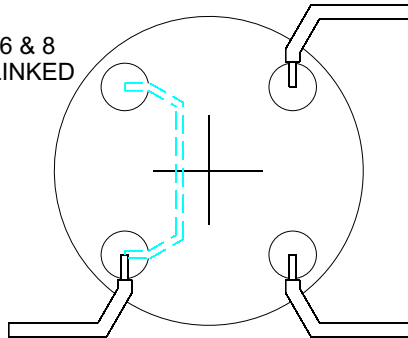
POSITION 1 =
GENERATOR



POSITION 2 =
SHORE



TERMINALS 6 & 8
INTERNALLY LINKED

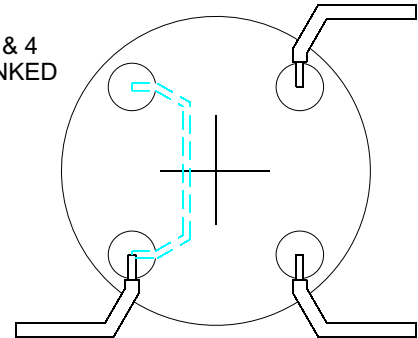


OUTPUT 'LIVE'

POSITION 1
(I.E. GENERATOR
INPUT 'LIVE')

POLE 1

TERMINALS 2 & 4
INTERNALLY LINKED



OUTPUT 'NEUTRAL'

POSITION 1
(I.E. GENERATOR
INPUT 'NEUTRAL')

POLE 2

NOTE : MINIMUM 2.5mm² CABLE REQUIRED

WIRING ILLUSTRATION

IMPORTANT INFORMATION

INFORMATION FOR REFERENCE PURPOSES ONLY.
 IN THE INTERESTS OF SAFETY THIS PRODUCT
 SHOULD ONLY BE INSTALLED BY AN ELECTRICALLY
 COMPETENT PERSON



Brian Ward
MARINE EQUIPMENT



Date:2009

COPYRIGHT
 Brian Ward Ltd
 Station Rd
 Brundall
 Norwich
 Norfolk NR13 5PJ
 TEL. (01603) 712213

01	6/07/09	MJR		ORIGINAL
Rev	Date	Drn	Chkd	Description
TITLE: DOUBLE POLE / CAM SWITCH WIRING INFORMATION				
Project REF:				
DRG. No:				REV
BW-ED0001				01